

A Better City Conversations

October 25, 2021

Jackie DeWolfe

Director of Sustainable Mobility
Office of the Secretary, MassDOT

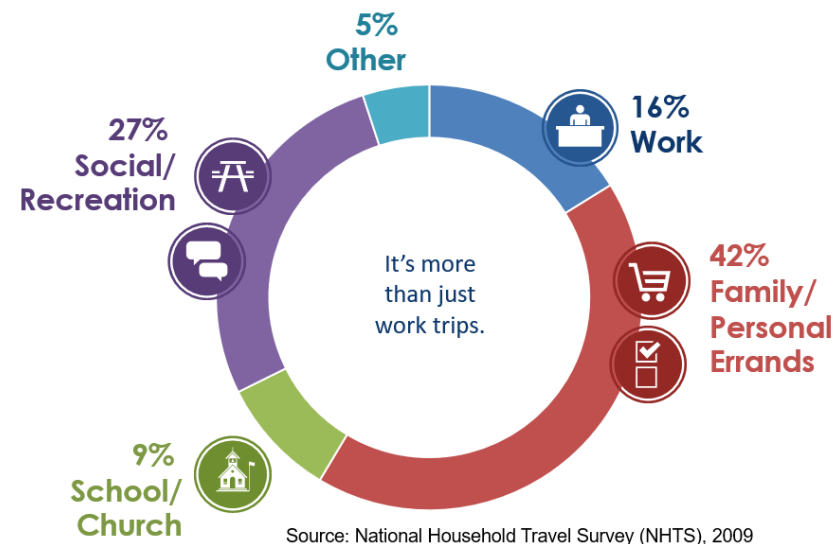






A focus on every day short trips

More than 50% of trips are less than 3 miles (~16 minutes bike ride)



Distance Buckets	Percentage of all trips	Bicycle	Pedestrian	Vehicle
0 – .5 mi	21.5%	.3%	95%	4.7%
.5 – 3 mi	35.6%	.9%	35.8%	63.3%
3 – 6mi	15.4%	.5%	2.2%	97.3%
All trips	---	.5%	30.9%	68.6%

www.massdottracker.com



95%

Of statewide trips between 0 and ½ mile are made by **pedestrians** (On average a 10-minute trip)



396

Average annual **pedestrian** fatalities and serious injuries occurred between 2014 and 2018



1.2%

Of statewide trips between 0 and 3 miles are made by **bicycle** (On average a 16-minute trip)



112

Average annual **bicyclist** fatalities and serious injuries occurred between 2014 and 2018



1,296

Miles of **sidewalks** are on MassDOT owned roads



43%

Of MassDOT owned roads have **sidewalks**



75

Miles of **designated bicycle facilities** are on MassDOT owned roads



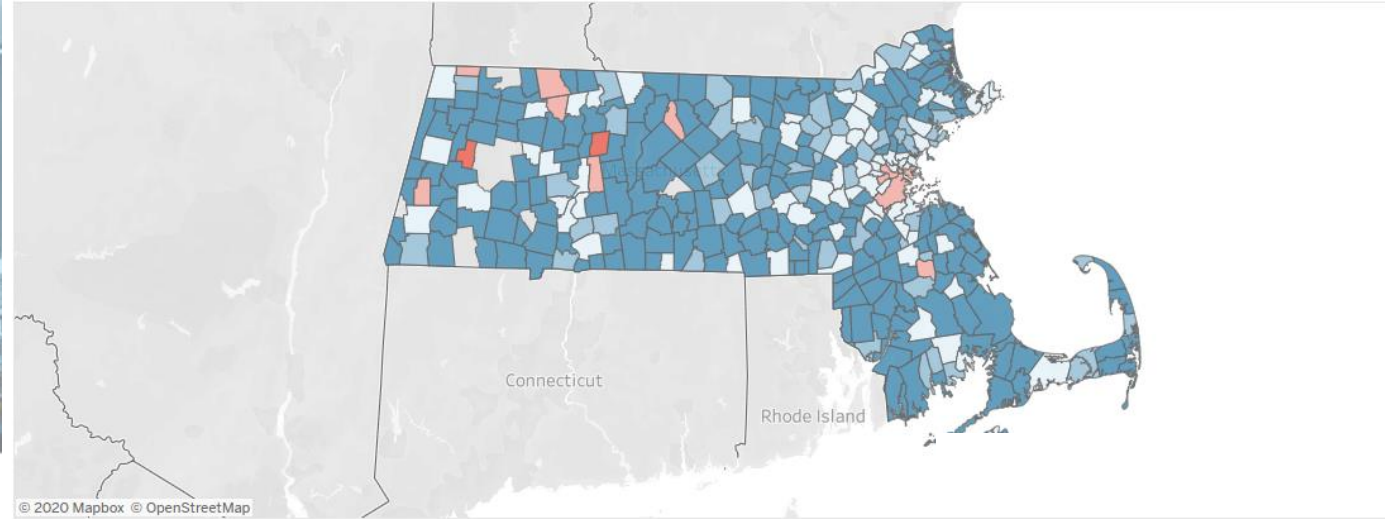
2.5%

Of MassDOT owned roads have **designated bicycle facilities**

www.massdottracker.com

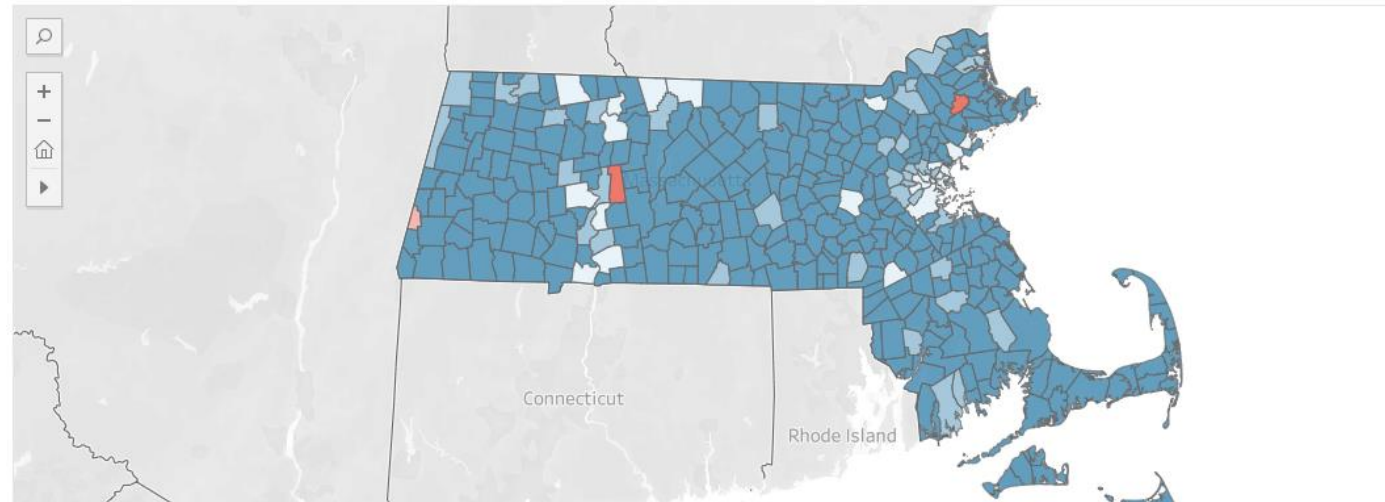
Change in Bicycle Activity by Municipality (Monthly), January through October 2019 vs 2020

October, 2019 vs 2020



Change in Pedestrian Activity by Municipality (Monthly), January through October 2019 vs 2020

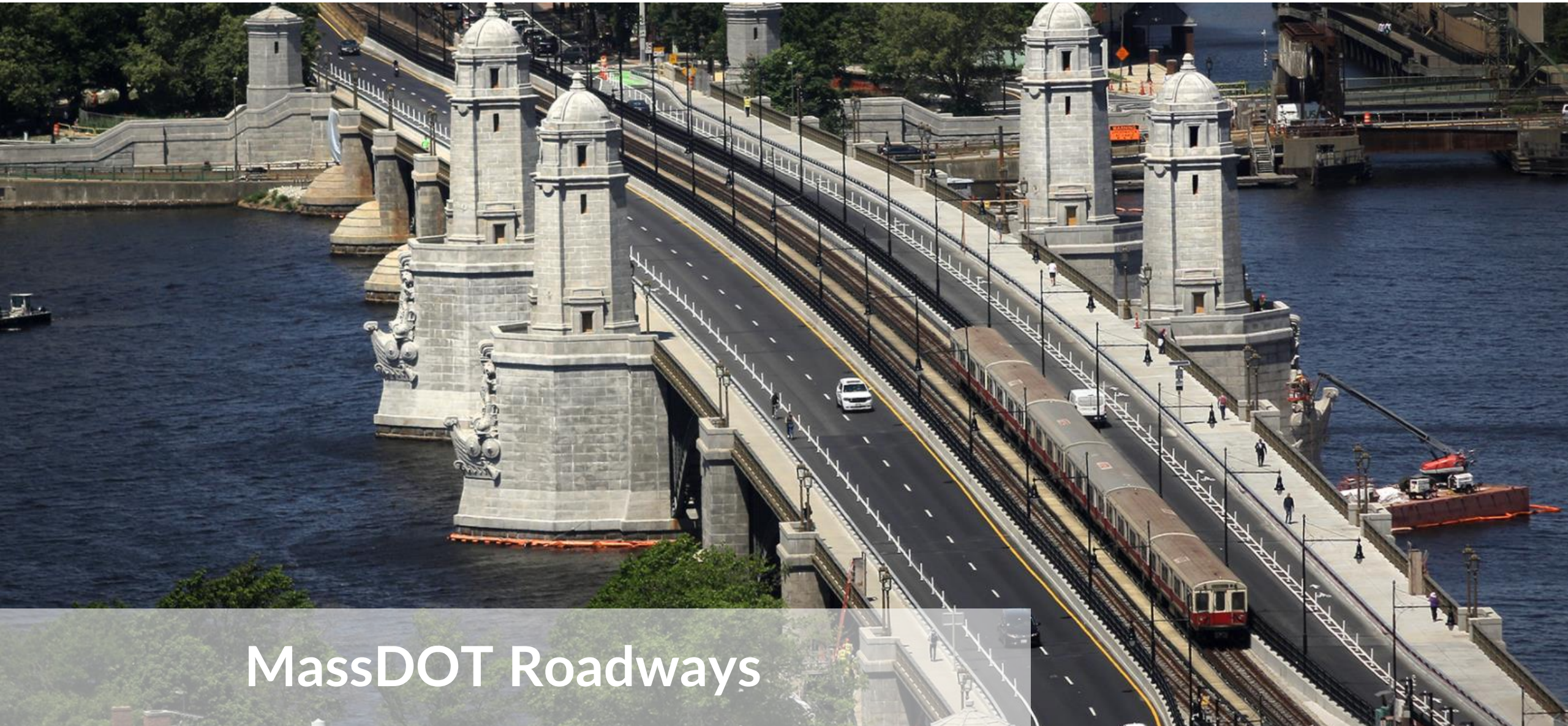
October, 2019 vs 2020



% Change, 2019 - 2020

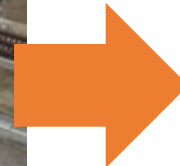
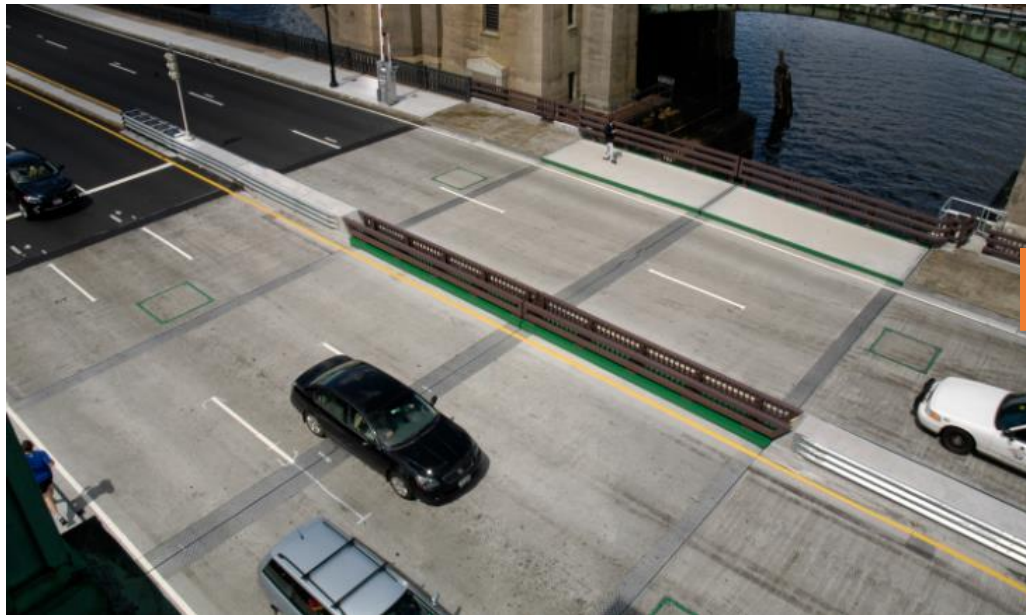
- Less than -50%
- 50% to -25%
- 25% to 25%
- 25% to 50%
- Greater than 50%

<https://mobility-massdot.hub.arcgis.com/>



MassDOT Roadways

Charles River Dam Road, Cambridge/Boston



Route 28, Reading



Capital Programs

Bicycle and Pedestrian
Modal Implementation
Program

Shared Use Paths / Trails
Program

Bus Transformation
Program



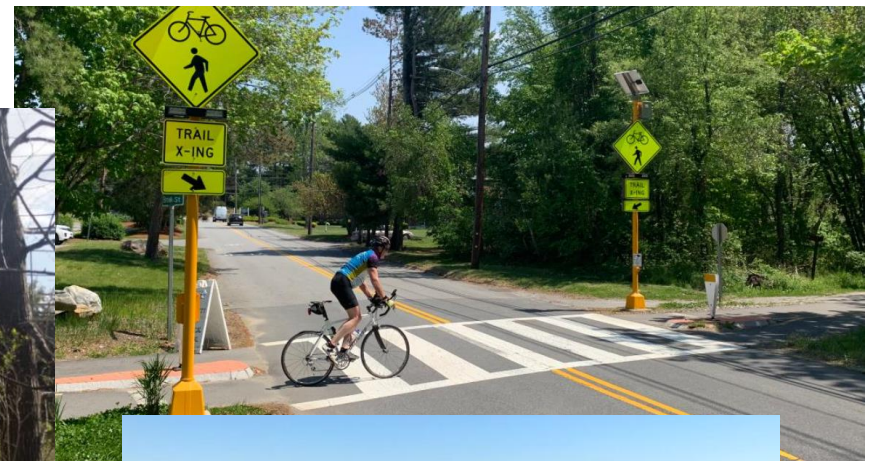
Construction of new shared use path / trail



Rendering of new bus lane



Site of upcoming pedestrian project

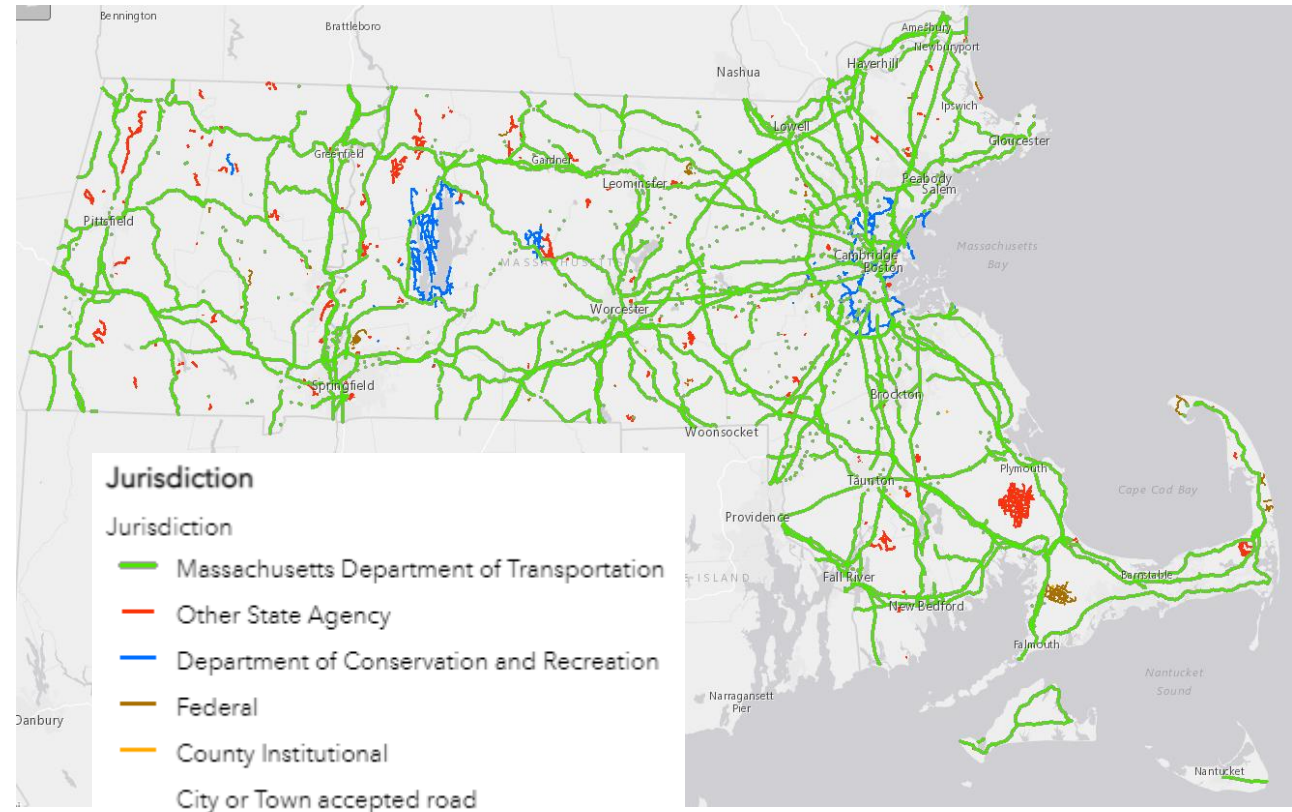
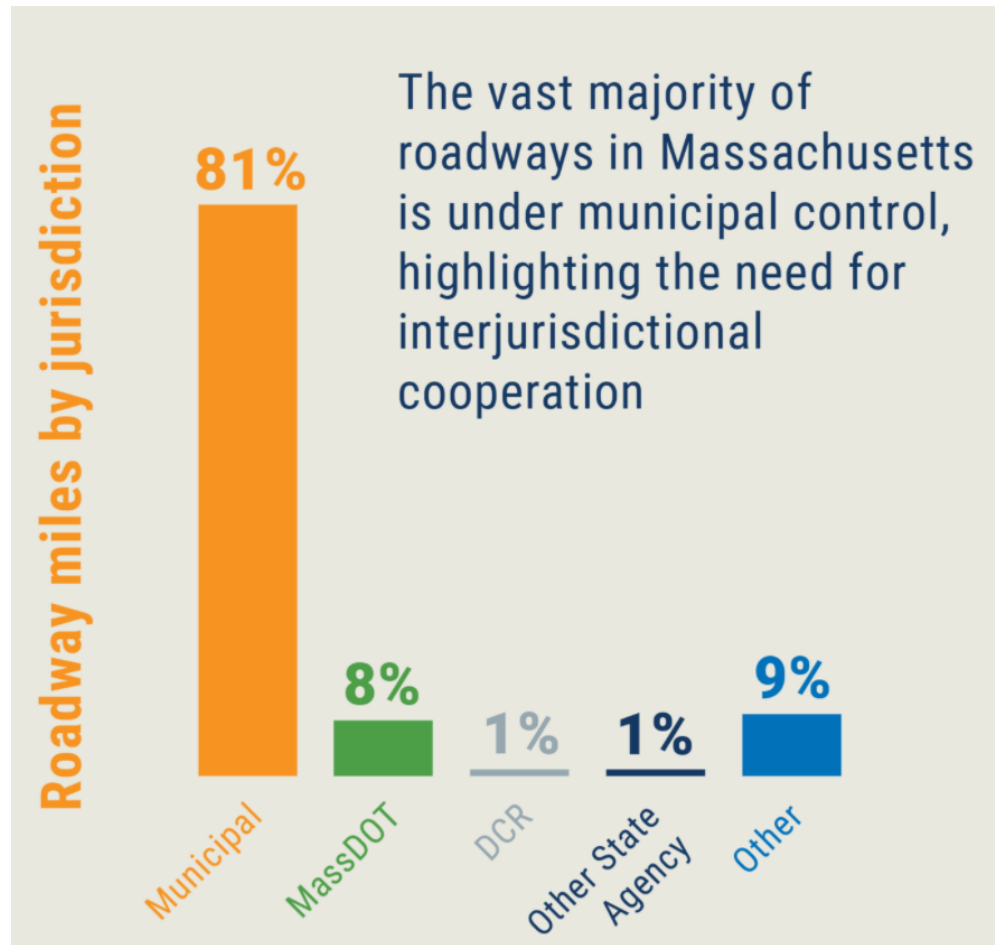


Shared Use Paths / Trails



Local Roadways

Partnerships



Municipal Programs

Workforce Transportation Program

The MassDOT Rail & Transit Division is launching a new program that will provide funding for projects aimed at meeting workforce transportation needs around the Commonwealth.

Safe Routes To School

Providing safe places for children to walk and bike, starting with their trip to school

Complete Streets Funding Program

A Complete Street is one that provides safe and accessible options for all travel modes - walking, biking, transit and vehicles - for people of all ages and abilities.

MassTrails Grants

MassTrails provides matching grants to communities, public entities and non-profit organizations to design, create, and maintain the diverse network of trails, trail systems, and trails experiences used and enjoyed by Massachusetts residents and visitors. Applications are accepted annually for a variety of well-planned trail projects benefiting communities across the state.

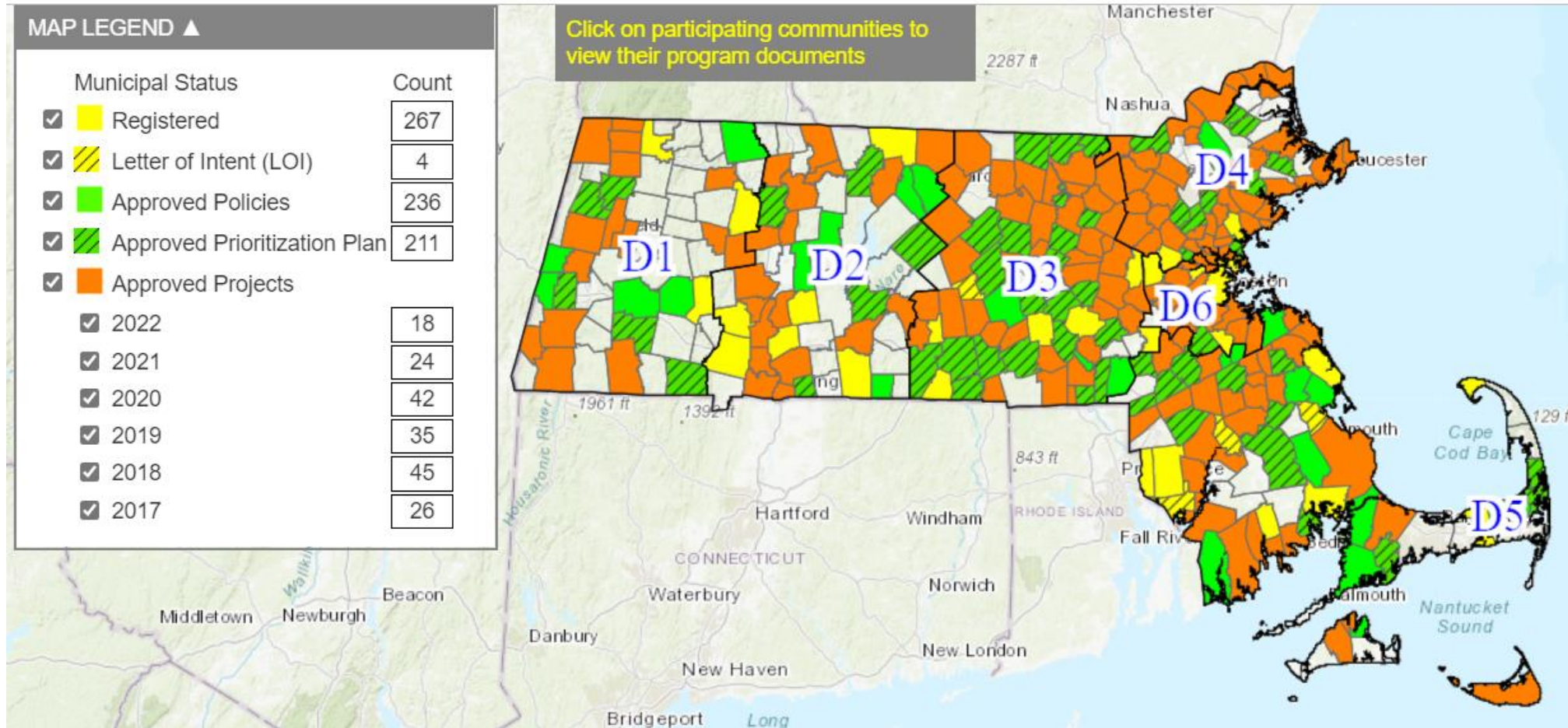


Shared Streets and Spaces Grant Program

A Quick-Launch/Quick-Build Municipal Funding Program

<https://geodot-local-massdot.hub.arcgis.com/pages/grants>

Complete Streets Funding Program



<http://gis.massdot.state.ma.us/completestreets>

Shared Streets and Spaces Grant Program

- To support public health, safe mobility, and renewed commerce
- Quick-build / Quick-launch
- Since June 2020, awarded \$33m to 183 municipalities and 4 transit agencies for a total of 310 projects



<https://www.mass.gov/shared-streets-and-spaces-grant-program>

More coming soon...



Mystic Bridge, Everett/Somerville



Systemic Safety / Safe Systems /
Speed Management

[2021 Update:](https://storymaps.arcgis.com/stories/446e35bc40614e5aaced4a62ff7343b2)

<https://storymaps.arcgis.com/stories/446e35bc40614e5aaced4a62ff7343b2>

Thank you

Jackie DeWolfe

Jacqueline.DeWolfe@state.ma.us